



**ALASKA DIVISION OF HOMELAND SECURITY &  
EMERGENCY MANAGEMENT**



**SITUATION REPORT 20-307 • Nov 02, 2020**

Toll-Free 1.800.478.2337

Anchorage Area 907.428.7000

SEOC 907.428.7100

<p><b><u>SEOC Preparedness Level</u></b> Level 2 Heightened Awareness – For COVID-19 Response</p>	<p><a href="http://ready.alaska.gov">http://ready.alaska.gov</a></p>	<p><b><u>National Terrorism Advisory System:</u></b> View this site for the latest NTAS bulletin: <a href="#">read the current NTAS Bulletin here.</a></p>
<p><b><u>Maritime Security (MARSEC)</u></b> Level:1-Minimum Appropriate Security Measures</p>	<p><b>WHO Novel Coronavirus Pandemic (COVID-19):</b> <a href="#">2019 Novel Coronavirus</a></p>	<p><b><u>Alaska Military Installation Force Protection Level:</u></b> FPCON Bravo</p>

(Significant changes from previous situation reports are in red.)

**THREAT LEVEL CHANGES:** None.

**Significant Issues**

**Coronavirus (COVID-19) Pandemic**

A unified command has been established at the SEOC. The SEOC continues to support statewide response to COVID-19.

**State of Alaska Department of Health and Social Services (DHSS)**

DHSS is operating as the Medical Branch under the State EOC/Unified Command.

For more information about the outbreak refer to:

<https://covid19.alaska.gov/>

<https://www.cdc.gov/coronavirus/2019-ncov/index.html>

The Alaska DHSS website is located at <http://dhss.alaska.gov/Pages/default.aspx>

**NTAS BULLETIN:**

To read current advisories, select the link below.

<https://www.dhs.gov/national-terrorism-advisory-system>

**Travel Alerts and Conditions**

COVID-19 Health Mandates may affect travel. Check <https://covid19.alaska.gov/> for current Health Mandates.

For current driving conditions dial 511 or link to <http://511.alaska.gov/>

## **Recent Earthquakes**

USGS Earthquake Information: <http://earthquake.usgs.gov/>

National Tsunami Warning Center: <http://ntwc.arh.noaa.gov/>

## **Alaska Volcanoes**

**Katmai Alert Level: Normal and Aviation Color Code: Green**

Strong northwesterly winds in the vicinity of Katmai and the Valley of Ten Thousand Smokes have picked up loose volcanic ash eruption and carried it to the southeast toward Kodiak Island today. The maximum cloud height is 5,000 ft above sea level. This is **not** the result of recent volcanic activity and occurs during times of high winds and dry snow-free conditions in the Katmai area.

**Korovin Alert Level: Advisory and Aviation Color Code: Yellow**

**Semisopchnoi Alert Level: Advisory and Aviation Color Code: Yellow**

For Alaska Volcano updates, go to: <https://www.avo.alaska.edu/>

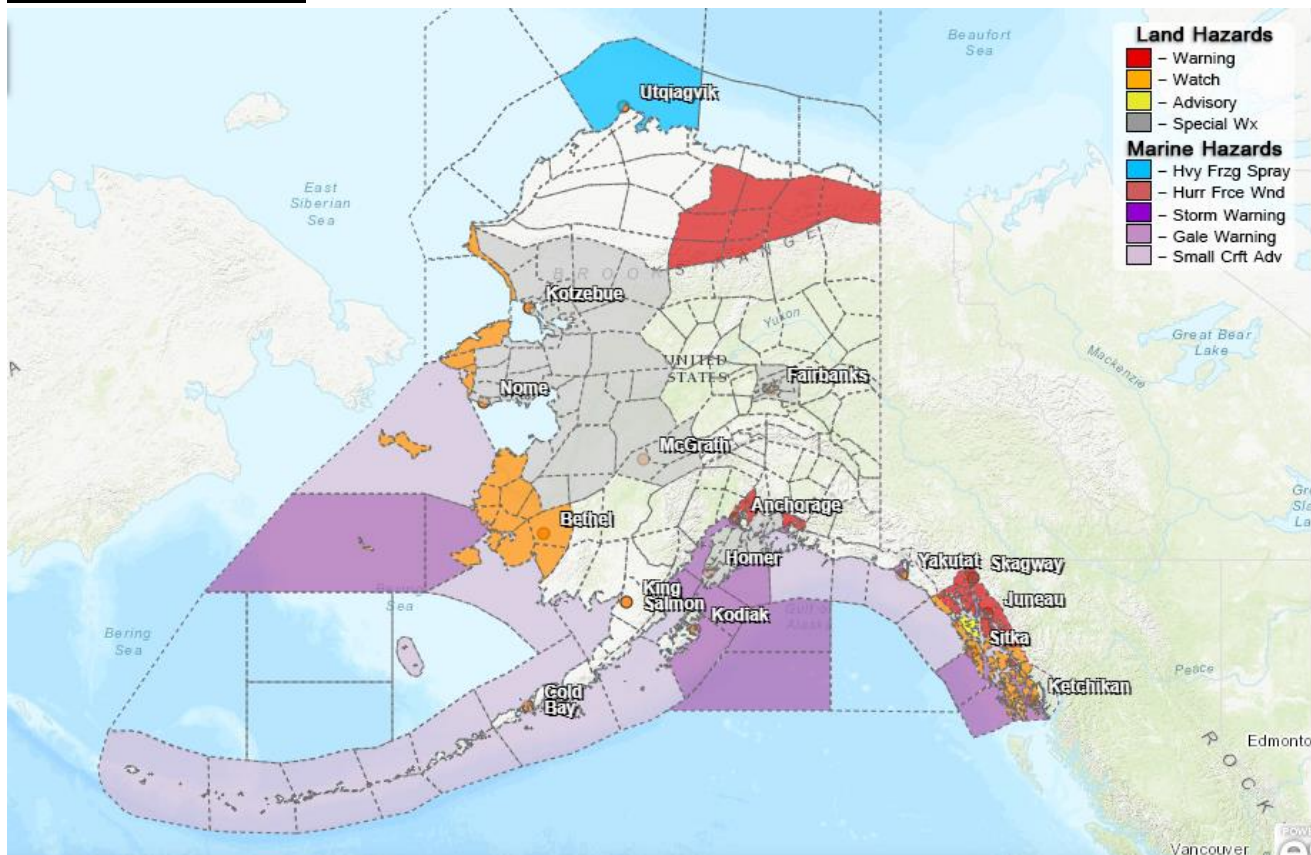
## **Air Quality Index (AQI) Advisories**

**Fairbanks / North Pole Zone:** Clear skies and cold temperatures will allow an inversion to set up in the evening, expect poor to very poor dispersion during the forecast period. Fairbanks air quality is forecasted to remain moderate with periods of unhealthy for sensitive groups or worse, during the alert period. North Pole air quality is forecasted to remain unhealthy for sensitive groups with periods of unhealthy or worse during the alert period.

For the most up to date Air Quality Index Advisories:

<http://dec.alaska.gov/Applications/Air/airtoolsweb/Home/Index>

## **Significant Weather:**



A Winter Storm Warning remains in effect until 9:00 A.M. today for freezing rain and snow accumulations of 6 to 12 inches in Glacier Bay, the Juneau Borough, and Northern Admiralty Island including the cities of Juneau and Gustavus.

A Winter Weather Advisory remains in effect until 9:00 A.M. today for rain and snow accumulations of 2 to 4 inches for Eastern Chichagof Island and Hoonah.

A Blizzard Warning is in effect until 1:00 P.M. today for Skagway, Dyea, Klondike Highway, Haines, and the Haines Highway. Total snow accumulations of 24 to 33 inches are forecasted for the area with wind speeds of 45 to 60 mph.

A Flood Watch remains in effect until 12:00 P.M. today for the Eastern, Southeast, and Central Gulf Coasts including the areas of Pelican, Sitka, Petersburg, Wrangell, Craig, Klawock, Ketchikan, and Metlakatla. Flooding of small streams and creeks from rapid rises will occur along with the potential risk of debris flows near steep terrain in prone areas through this morning.

A Special Weather Statement has been issued for the Western Coast of Alaska and the Western Interior late this week. A powerful storm is expected to impact the area Wednesday night through Friday night. This storm will begin with strong southeast winds and heavy snow along the coast, with that snow moving inland during the day on Thursday.

A High Wind Warning is in effect until 12:00 P.M. tomorrow for the Mat-Su Valley. Sustained winds of 35 to 45mph with gusts to 65mph are expected throughout the area.

A High Surf Advisory is in effect until 9:00 A.M. on 11/04 for the Chukchi Sea Coast, St. Lawrence Island, Bering Strait Coast, and the Yukon Delta. Wind speeds in the areas from 25 to 40 mph are expected to increase water levels 1 to 3 feet above the normal high tide lines.

A Winter Storm Watch remains in effect until 9:00 A.M. on 11/04 for the Kuskokwim Delta and Yukon Delta. Blizzard conditions are possible with snow accumulation of 1 to 3 inches in the area.

A Winter Storm Warning remains in effect until 3:00 P.M. today for the Northeastern Brooks Range. Additional snow accumulations of up to 3 inches are expected.

For more information and the most current weather, Watches / Warnings / Advisories go to: <http://www.weather.gov/arh/>

For Fire weather: <https://fsapps.nwcg.gov/psp/npsg/forecast/#/outlooks?state=map&gacclid=1>

### **Spills of Oil and Hazardous Substances**

The ADEC Spill Prevention and Response page is located at:

<http://dec.alaska.gov/spar/ppr/spill-information/response/>

### **Alaska Cyber Security Information**

State Employees may sign up for cybersecurity notifications and alerts at

<https://oit.alaska.gov/Security>

**The Next Situation Report:** will be 03 November 2020. A significant change in the situation or the threat level will prompt an interim report.

This report is posted on the internet at <https://ready.alaska.gov/sitrep>. To register for email distribution, go to <http://list.state.ak.us/mailman/listinfo/dhsem.situation.report>. Direct questions regarding this report to the SEOC at 907-428-7100 or [seoc@alaska.gov](mailto:seoc@alaska.gov).